



PANELHUSH PET SLATS

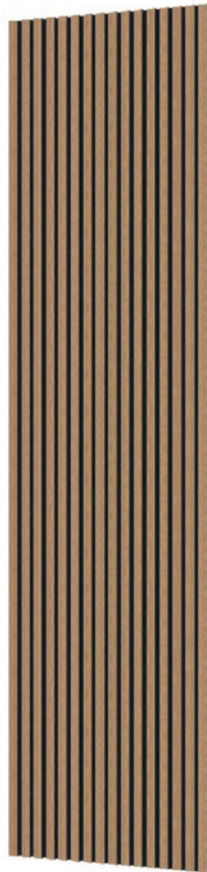
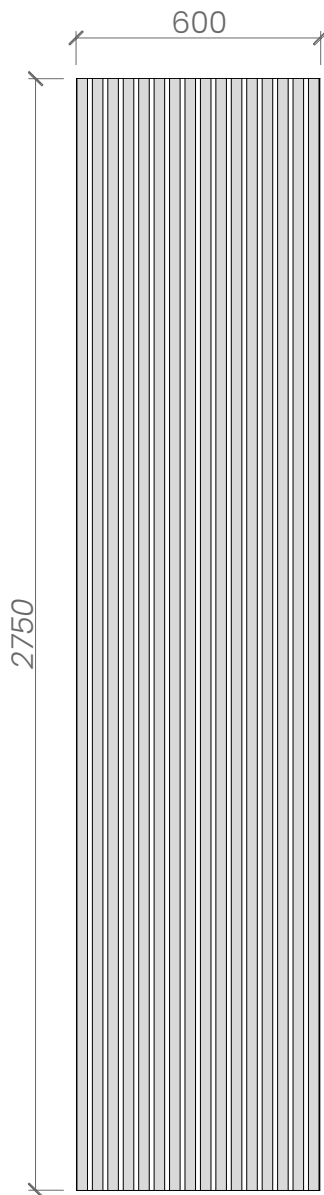


PRODUCT INFO

PanelHush PET Slats are made from 75% recycled polyester, giving them strong sound-absorbing power for clearer, calmer spaces. They also help break up unwanted echoes while offering a sleek look that rises above standard timber slats.

Our 12mm PET slats come in many finishes and can be printed with almost any design to match your style. They are set at a simple standard size but can be shaped and sized to suit any project, blending smart performance with modern design flexibility.

PanelHush SLATS DESIGNS



WOOD PRINT



SOLID COLOUR



PRINTED

Slat Width: 28mm
Distance Between Slats: 12mm
Joining Edge Taper: 12mm
Maximum Height: 2750mm

Maximum Width: 1200mm (600mm Standard)
Slat Base Colour: PRINTED ONTO OPAL/WHITE
Slat Thickness: 12mm OR 24mm (12mm Standard)
Base Board Thickness: 12mm OR 24mm (12mm Standard)

PRODUCT	ARTICLE	DIMENSION	THICKNESS
Wood Print	04WTSLA-WPT000	2750mm x 600mm x 24mm	24mm
Solid Colour	04WTWCG-SCR000	2750mm x 600mm x 24mm	24mm
Printed	04WTWCG-PSS000	2750mm x 600mm x 24mm	24mm

MATERIAL INFORMATION

COMPOSITION:	75% Recycled PET Fibre 25% Virgin Fibre
FIRE RATING:	24mm EN13501-1:2007+A1:2009 B - S2, D0
DENSITY:	4.8kg/m ² (34mm)
ACOUSTICS:	Class D Absorber

*Our PaneHush PET panels have a Thickness Tolerance of ±1 mm and a Length & Width Tolerance of ±3 mm



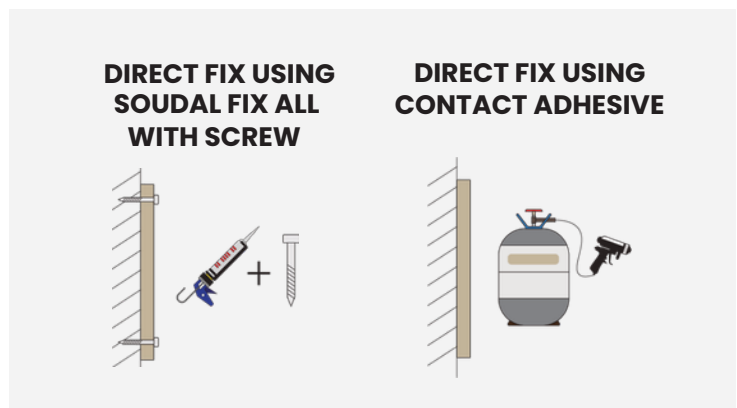
FINISHES

Slats are available in two core colour styles: Solid Colour and Printed Texture. Select a base colour and choose a slat colour to build your panel.

INSTALLATION

PanelHush PET Panels cater for all project budgets and have multiple fixing methods.

Slats wall covering can be installed using the following method:



DESIGN TIPS

These are just some design tips you can do in order to maximise the full potential of our Slats products:

1. Determine the size, spacing, and orientation of the slats based on the desired aesthetic and functional requirements.
2. Choose Colours and finishes that complement the overall design scheme of the space. PET panels are available in a variety of Colours.
3. Use the slats wall covering as a branding opportunity by incorporating company Colours or logos in commercial spaces.
4. Consider the placement of electrical outlets or access points if needed for future maintenance or upgrades.

ACOUSTIC PERFORMANCE

PanelHush PET panels absorb, reflect, or let sound pass through, helping shape how sound moves in a room. Their strong acoustic ability helps lower noise, improve speech clarity, and create spaces that feel calm, clear, and comfortable.

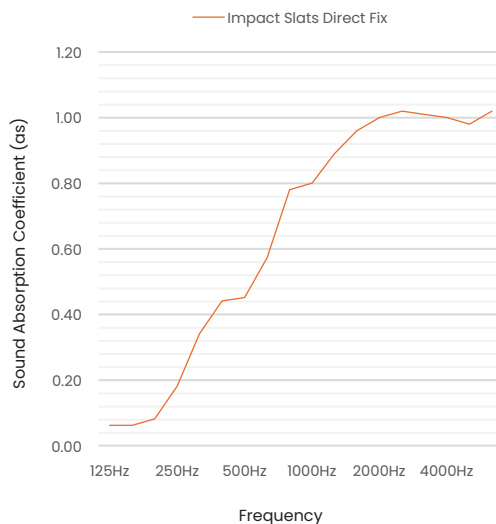
TESTING STANDARDS

ISO 354	Measurement of sound absorption in a reverberation room
ISO 11654	Sound absorbers for use in buildings – Rating of sound absorption
ASTM C423-17	Standard Test Method for Sound Absorption and Sound Absorption Coefficients by the Reverberation Room Method
ACOUSTICS:	Sound absorbers for use in buildings – Rating of sound absorption

ACOUSTICALLY TESTED SLATS	α_w	NRC	CLASS
Slats Direct Fix	0.45(MH)	0.60	D

For α_w , it is strongly recommended to use this single-number rating in combination with the complete sound absorption curve that can be obtained on request.

FREQUENCY (Hz)	125	250	500	1000	2000	4000
Slats Direct Fix	0.05	0.15	0.45	0.85	1.00	1.00



Weighted Sound Absorption Coefficient (α_w) - Measured in accordance with ISO 11654. Practical sound absorption coefficient α_p values at given standard frequencies are compared with reference curve α_w .

Noise Reduction Coefficient (NRC) - The mean average as value at frequencies 250, 500, 1000 and 2000 Hz.

Absorption Class - Levels of comparison of absorption values against a reference curve with A as highest and E as lowest. Measured in accordance with ISO 11654.

Practical Sound Absorption Coefficient (α_p) - The average of the three α_s values centered on the 1/3 octave band center frequency, measured in accordance with EN ISO 354.

Note: The sound absorption values provided in this product sheet are subject to change without prior notice from The Acoustics Company. For the most current and accurate technical specifications, please contact our Sales Team directly.

