

PanelHush PET 24mm Finish Chart

24MM PET colour range. Swatches are visual approximations for selection support only; request

Sheet size: 1200 x 2800 x 24mm | Material: 75% Recycled PET Fibre / 25% Virgin Fibre | Fire rating: EN13501-1 B-s1, d0



PanelHush PET 24mm Finish Chart

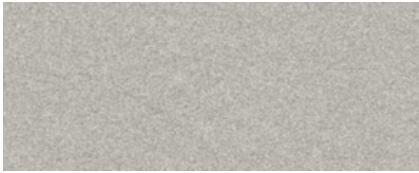
<p>BLACK Sheet Size: 1200 x 2800 x 24MM 24MM Code: BLA12</p> 	<p>CHARCOAL GREY Sheet Size: 1200 x 2800x24MM 24MM Code: CGR12</p> 	<p>SLATE GREY Sheet Size: 1200 x 2800 x 24MM 24MM Code: SGR12</p> 	<p>ICE WHITE Sheet Size: 1200 x 2800 x 24MM 24MM Code: IWH12</p> 
<p>WHITE Sheet Size: 1200 x 2800 x 24MM 24MM Code: WHI12</p> 	<p>OPAL Sheet Size: 1200 x 2800 x 24MM 24MM Code: OPA12</p> 	<p>SAND Sheet Size: 1200 x 2800 x 24MM 24MM Code: SAN12</p> 	<p>NOCTURN Sheet Size: 1200 x 2800 x 24MM 24MM Code: NOC12</p> 
<p>CARAMEL Sheet Size: 1200 x 2800 x 24MM 24MM Code: CAR12</p> 	<p>SAGE Sheet Size: 1200 x 2800 x 24MM 24MM Code: SAG12</p> 	<p>NEPTUNE Sheet Size: 1200 x 2800 x 24MM 24MM Code: NEP12</p> 	<p>EDEN Sheet Size: 1200 x 2800 x 24MM 24MM Code: EDE12</p> 
<p>MISTY DEW Sheet Size: 1200 x 2800 x 24MM 24MM Code: MDE12</p> 	<p>RUST Sheet Size: 1200 x 2800 x 24MM 24MM Code: TER12</p> 	<p>OCEAN Sheet Size: 1200 x 2800 x 24MM 24MM Code: OCE12</p> 	<p>MAGNOLIA Sheet Size: 1200 x 2800 x 24MM 24MM Code: MAG12</p> 

Colours on-screen and printed output can vary. Physical samples should be requested before placing an order.

PanelHush PET 24MM Finish Chart

CLOUDS

Sheet Size: 1200 x 2800 x 24MM
24MM Code: CLO12



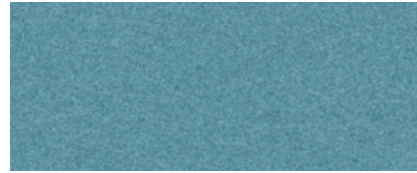
NATURAL

Sheet Size: 1200 x 2800 x 24MM
24MM Code: NAT12



CYPRUS

Sheet Size: 1200 x 2800 x 24MM
24MM Code: CYP12



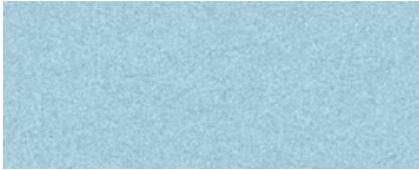
MARBLE

Sheet Size: 1200 x 2800 x 24MM
24MM Code: MAR12



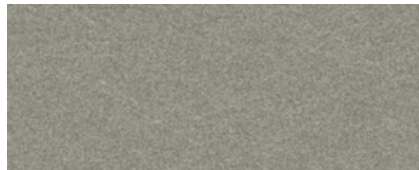
PARADISE

Sheet Size: 1200 x 2800 x 24MM
24MM Code: PAR12



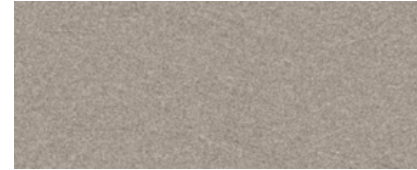
PURBECK

Sheet Size: 1200 x 2800 x 24MM
24MM Code: PUR12



OYSTER

Sheet Size: 1200 x 2800 x 24MM
24MM Code: OYS12



Material Information

Composition	75% Recycled PET Fibre 25% Virgin Fibre
Fire rating	EN13501-1:2007+A1:2009 B-s1, d0
Density	3.8kg/m2 (24mm)
Acoustics	Class A, C, and D Absorber
Tolerance	PanelHush panels have a cutting tolerance of +/- 3mm

